

800AJ Articulating Boom Lift



APPLICATIONS

- Facilities maintenance
- Electricians
- Plumbers
- All maintenance and construction work
- Factory fit outs before electrical power is connected
- Steel building fabrication and pipe installation
- Steel cladding contractors

One handed operation for operator comfort and control. Proportional drive controller, gives smooth control

Proportional controller for lift and lower and boom swing give smooth control

Main boom function provides increased outreach and allows fast operation from ground to full height using boom lift and jib

Jib boom and basket rotate allows additional functionality and access to hard to reach positions

Low maintenance steel platform with non-skid mesh floor, and side entry gate. Enclosed foot switch

Articulating knuckle boom function provides increased outreach and allows fast operation from ground to full height using upper boom "quick stick" function

Cylinder boots protect cylinder shafts from debris and contaminants

Deutz 4 cylinder oil cooled diesel engine and transmission pump for drive performance matched to the engine output

Tie down and lifting lugs for ease of transport

Urethane filled, puncture proof lug tyres

4 wheel drive with hydraulic piston 2 speed motors, gear reduction hubs and spring applied brakes for four wheel drive traction, provides maximum traction and ease of steering

Front axle oscillates when travelling with counterweight over steer tyres, assists in accessing difficult sites

4 wheel steer with operator selectable individual steer function for ease of operation



Ph: 1300 87 44 73

**UNIT 13 & 14, 61-63 Regentville Road,
Jamisontown, NSW 2750**

800AJ Articulating Boom Lift

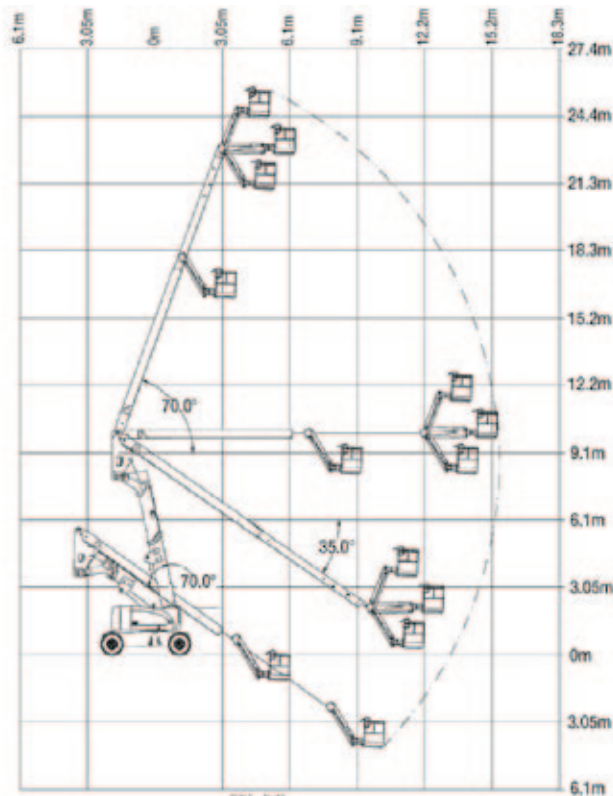


QUESTIONS TO ASK

- What are the ground conditions in the work area?
- What are the site conditions travelling around the site?
- What is the working height needed for the job?
- What is the outreach required for the job?
- What is the up and over height needed to reach when working in congested sites?
- Do you need an extension lead outlet in the platform?
- Will inbuilt Miller 5.5kVA generator make the job easier?

KEY SELLING POINTS

- Smooth control, proportional hydraulic 4 wheel drive, with two speed ranges
- Proportional lift and swing controls at the platform for fast functionality
- Oscillating front steer axle with the boom within 10 degrees of centre, assists 4 wheel drive traction
- Jib boom and basket rotate
- Knuckle boom arrangement allows fast operating speeds, QUIK-STICK function allows ground to full height operation with one controller
- Cylinder boots protect cylinder rods from overspray and contaminants
- Large lug pattern urethane filled tyres
- Multi axis 4 degree level sensor
- Plug in JLG analyser at platform and base to indicate system functions for servicing and adjustment
- Deutz Engine F4M2011 5DZXL03. High speed, 4 cylinder, liquid (oil cooled), 48.5kW, engine pre-glow and post-glow feature reduces emissions



SPECIFICATIONS

Performance:

Platform Height (max.)	24.38m
Working Height	26.38m
Platform Rotation Angle	180°
Jib Raise Angle	70°
Jib Lower Angle	60°
Jib Articulation Range	130°
Maximum Horizontal Outreach	15.8m
Platform Capacity	230kg
Slewing Angle	360°
Continuous Slew	Yes

Dimensions:

Stowed Length	11.13m
Stowed Height	3.0m
Overall Width	2.44m
Wheelbase	3.05m
Ground Clearance	0.30m
Platform Width	2.44m
Platform Length	0.91m
Overall Jib Length	1.83m
Tailswing	0.76m
Axle Oscillation	Std

Power:

Power Source	Diesel
Engine Make	Deutz
Engine Model	D2011 L04
Engine Power	48kW
Genset	5.5kVA Miller
Auxiliary Power	12V Pump

Travel:

Tyre Size	445/55 x 19.5
Tyre Type	Foam Fill
Inside Turn Radius	2.13m
Outside Turn Radius	4.42m
Gradeability with 4WD	45%
Drive Speed - 4WD	4.8km/h
Maximum Ground Bearing Pressure	5.3kg/cm ²

Weights and Capabilities:

Fuel Tank Capacity	147.63 Ltr
Hydraulic Tank Capacity	151.42 Ltr
Operating Weight	15,558kg



Ph: 1300 87 44 73

**UNIT 13 & 14, 61-63 Regentville Road,
Jamisontown, NSW 2750**