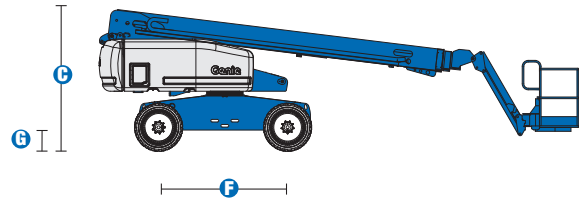
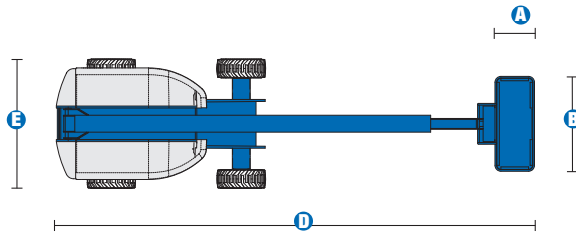




# Specifications



## MODEL S™-65

MEASUREMENTS	Metric	US
Working height maximum*	21.80 m	71 ft
Platform height maximum	19.80 m	65 ft
Horizontal reach maximum	17.10 m	56 ft 2 in
Below ground reach	2.72 m	8 ft 11 in
<b>A</b> Platform length	0.91 m	3 ft
<b>B</b> Platform width	2.44 m	8 ft
<b>C</b> Height - stowed	2.72 m	8 ft 11 in
<b>D</b> Length - stowed	9.50 m	31 ft 2 in
Length - transport (jib tucked under)	7.60 m	25 ft
<b>E</b> Width	2.49 m	8 ft 2 in
<b>F</b> Wheelbase	2.50 m	8 ft 2.5 in
<b>G</b> Ground clearance - center	0.37 m	1 ft 2.5 in

## PRODUCTIVITY

Lift capacity	227 kg	500 lbs
Platform rotation	160°	160°
Vertical jib rotation	135°	135°
Turntable rotation	360° continuous	
Turntable tailswing	1.22 m	4 ft
Drive speed - 4WD stowed	4.8 km/h	3.0 mph
Drive speed - raised or extended	1.1 km/h	0.68 mph
Gradeability - 4WD - stowed**	45%	45%
Turning radius - inside	2.36 m	7 ft 9 in
Turning radius - outside	5.72 m	18 ft 9 in
Controls	12 V DC proportional	
Tyres - RT lug - Foam filled	355/55D 625	

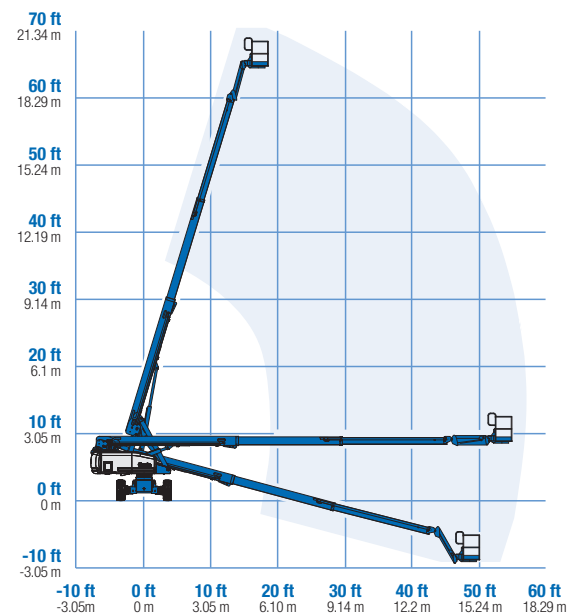
## POWER

Power source	Deutz D2011L03i 3 cylinder diesel 46 hp (34.3 kW)	
Auxiliary power unit	12V DC	12V DC
Hydraulic tank capacity	170 L	45 gal
Fuel tank capacity	132 L	35 gal

## WEIGHT\*\*\*

	10,349 kg	22,815 lbs
--	-----------	------------

## RANGE OF MOTION S™-65



## STANDARDS COMPLIANCE



**Ph: 1300 87 44 73**

**UNIT 13 & 14, 61-63 Regentville Road,  
Jamisontown, NSW 2750**



## Features

### STANDARD FEATURES

#### MEASUREMENTS

- 21.80 m (71 ft) working height
- 17.10 m (56 ft 2 in) horizontal reach
- Up to 227 kg (500 lb) lift capacity

#### PRODUCTIVITY

- 2.44 m (8 ft) steel platform
- 1.52 m (5 ft) jib boom with 135° working range
- 4WD
- Full-time active oscillating axle
- Rough terrain foam-filled tyres
- Self-leveling platform
- Hydraulic platform rotation
- Fully proportional Hall effect joystick controls
- Drive enable
- Tilt alarm
- Motion alarm
- Descent alarm
- Hour meter
- Horn
- 360° continuous turntable rotation
- Positive traction drive
- Two speed wheel motors
- Engine gauge package
- Thumb rocker steer
- Dual flashing beacons

#### POWER

- 12 V DC auxiliary power
- Deutz diesel 34.3 kW (46 hp)
- Anti-restart engine protection
- Auto engine fault shutdown
- Swing out engine tray
- Deutz intake air heater

### OPTIONS & ACCESSORIES

#### PRODUCTIVITY

- Platform swing gate
- Half-mesh platform inserts with swing gate
- Platform top auxiliary rail
- Air line to platform
- Hydraulic oil cooler
- Fire resistant hydraulic oil
- Biodegradable hydraulic oil
- Basic hostile environment kit
- Deluxe hostile environment kit
- Deluxe aircraft protection package (6 ft platform)
- Tool tray
- Fluorescent tube caddy
- Platform work lights
- Front driving lights
- Lockable platform control box covers
- Second battery
- Tow package
- 1.83 m (6 ft) steel platform
- Rough terrain non-marking tyres (foam-filled)

#### POWER OPTIONS

- 240 V power to platform
- 7 kVA hydraulic generator (240 V/50 Hz)
- Cold Weather Packages
- Arctic Packages
- Diesel scrubber/spark arrestor muffler
- Retained key selector switch



**Ph: 1300 87 44 73**

**UNIT 13 & 14, 61-63 Regentville Road,  
Jamisontown, NSW 2750**