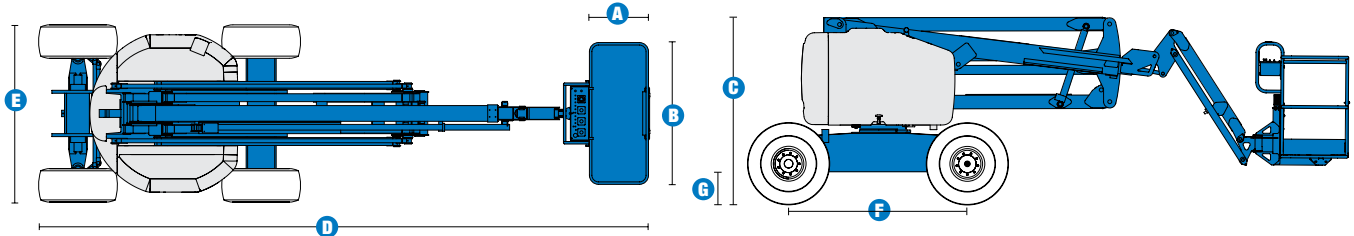


# Specifications



MODEL	Z™-51/30J RT	
MEASUREMENTS	Metric	US
Working height maximum*	17.62 m	57 ft 3 in
Platform height maximum	15.62 m	51 ft 3 in
Horizontal reach maximum	9.25 m	30 ft 4 in
Up-and-over clearance at primary arm	7.47 m	24 ft 6 in
<b>A</b> Platform length	0.76 m	2 ft 6 in
<b>B</b> Platform width	1.83 m	6 ft
<b>C</b> Height - stowed	2.16 m	7 ft 1 in
<b>D</b> Length - stowed	7.50 m	24 ft 6 in
<b>E</b> Width	2.29 m	7 ft 6 in
<b>F</b> Wheelbase	2.03 m	6 ft 8 in
<b>G</b> Ground clearance - centre	0.39 m	1 ft 3.5 in

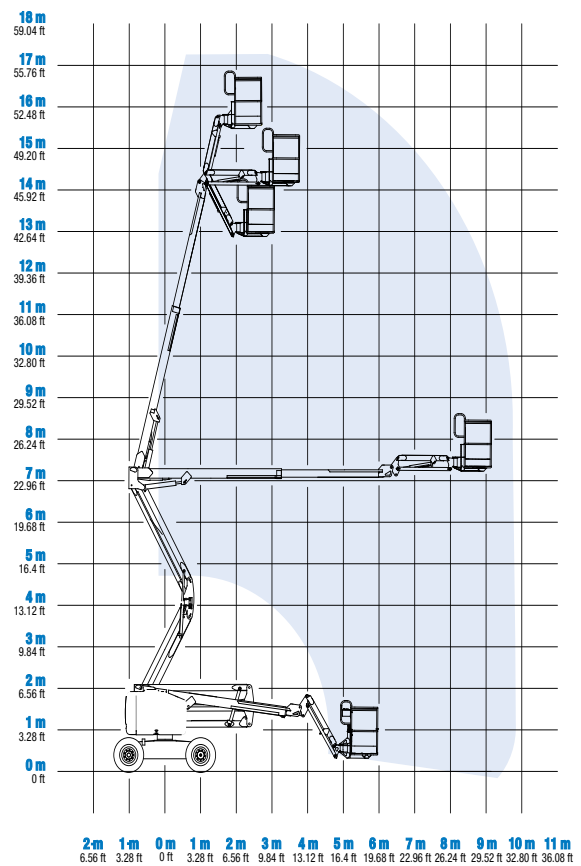
PRODUCTIVITY		
Lift capacity	227 kg	500 lbs
Platform rotation	160°	160°
Vertical jib rotation	135°	135°
Turntable rotation	355° non-continuous	
Turntable tailswing	zero	zero
Drive speed - stowed	8 km/h	5 mph
Drive speed - raised**	1.1 km/h	0.6 mph
Gradeability - 4WD - stowed***	45%	45%
Turning radius - inside	1.68 m	5 ft 6 in
Turning radius - outside	4.50 m	14 ft 9 in
Controls	12V DC proportional	
Tyres - RT Lug - Foam filled	355/55 D625	

POWER		
Power source	Deutz L03i 2011 3 cylinder diesel 48 hp (35.8 kW)	
Auxiliary power unit	12V DC	12V DC
Hydraulic tank capacity	90.8 L	24 gal
Fuel tank capacity	64.4 L	17 gal

WEIGHT****		
	7,212 kg	15,900 lbs

**STANDARDS COMPLIANCE** CE compliance, AS 1418.10

## RANGE OF MOTION Z™-51/30J RT



\* The metric equivalent of working height adds 2 m to platform height. U.S. adds 6 ft to platform height.  
 \*\* In lift mode (platform raised), the machine is designed to operate on firm, level surfaces only.  
 \*\*\* Gradeability applies to driving on slopes. See Operator's Manual for details regarding slope ratings.  
 \*\*\*\* Weight will vary depending on options and/or country standards.

## Features

### STANDARD FEATURES

#### MEASUREMENTS

- 17.62 m (57 ft 3 in) working height
- 9.25 m (30 ft 4 in) horizontal reach
- 7.16 m (23 ft 6 in) up-and-over clearance
- Up to 227 kg (500 lbs) lift capacity

#### PRODUCTIVITY

- 1.83 m (6 ft) steel platform
- 1.52 m (5 ft) jib boom with 135° working range
- 4WD
- Active oscillating axle
- Rough terrain foam-filled tyres
- Self-levelling platform
- Hydraulic platform rotation
- Fully proportional controls
- Drive enable system
- Horn
- Hour meter
- Tilt alarm
- 355° non-continuous turntable rotation
- Zero tailswing
- Positive traction drive
- Thumb rocker steer joystick
- Alarm package
- Dual flashing beacons

#### POWER OPTIONS

- 12 V DC auxiliary power
- Deutz Diesel LO3i 2011 35.8 kW (48 hp)
- Engine protection package
- Deutz intake air heater

### OPTIONS & ACCESSORIES

#### PRODUCTIVITY

- Platform swing gate
- Half mesh platform inserts with swing gate
- Platform top auxiliary rail
- Air line to platform
- Basic hostile environment kit
- Tool tray
- Fluorescent tube caddy
- Pipe cradle (pair)
- Platform work lights
- Front driving lights
- Lockable platform control box covers
- Tow package
- 1.22 m or 1.52 m (4 or 5 ft) steel platform
- Rough terrain non-marking foam-filled tyres

#### POWER OPTIONS

- Engine gauge package
- 7 kVA hydraulic AC generator (220 V/50 hz)
- Arctic hoses
- Diesel scrubber/spark arrestor
- Diesel spark arrestor muffler
- 240 V power to platform



### Genie Australia – Toll free number 1800 788 633

**Brisbane (Head Office)**  
33 Kimberley Street  
Darra QLD 4076

**Sydney**  
74 Glendenning Road  
Glendenning NSW 2761

**Melbourne**  
374 Hammond Road  
Dandenong VIC 3175

**Perth**  
126 Sheffield Road  
Welshpool WA 6106

### Genie United States Distributed by:

18340 NE 76th Street  
P.O. Box 97030  
Redmond, Washington  
98073-9730

Effective Date: April 2012. Product specifications and prices are subject to change without notice or obligation. The photographs and/or drawings in this document are for illustrative purposes only. Refer to the appropriate Operators' Manual for instructions on the proper use of this equipment. Failure to follow the Operators Manual when using our equipment or to otherwise act irresponsibly may result in serious injury or death. The only warranty applicable to our equipment is the standard written warranty applicable to the particular product and sale and we make no other warranty, express or implied. Products and services listed may be trademarks, service marks, or trade names of Terex Corporation, Terex South Dakota, Inc., and/or their subsidiaries in the USA and other countries. All rights reserved. Terex is a registered trademark of Terex Corporation in the USA and many other countries. Genie is a registered trademark of Terex South Dakota, Inc. in the USA and many other countries. ©2009 Terex Corporation.