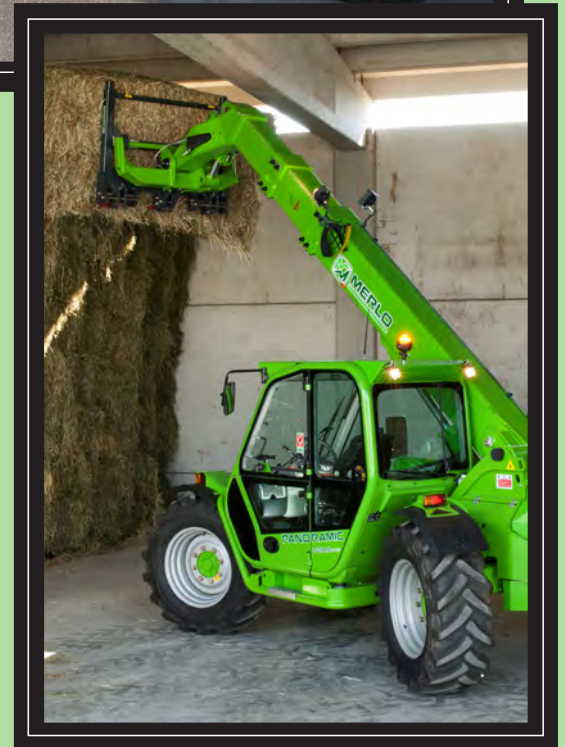
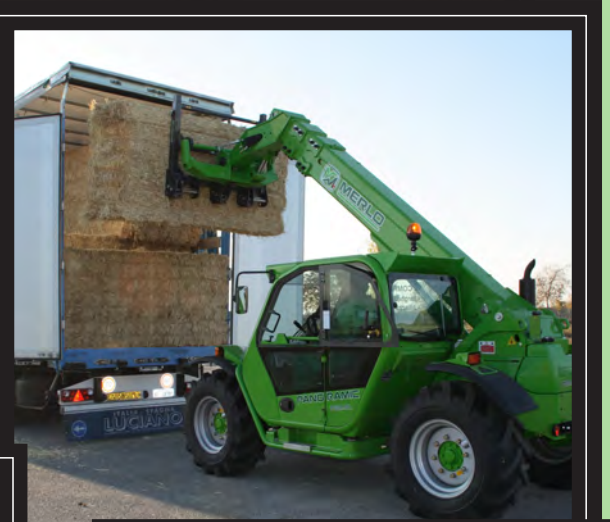


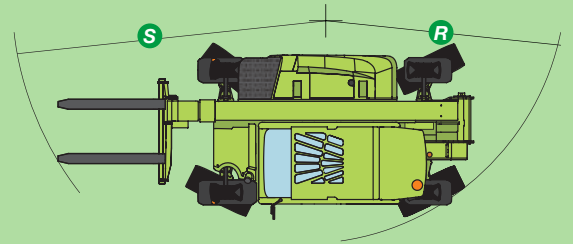
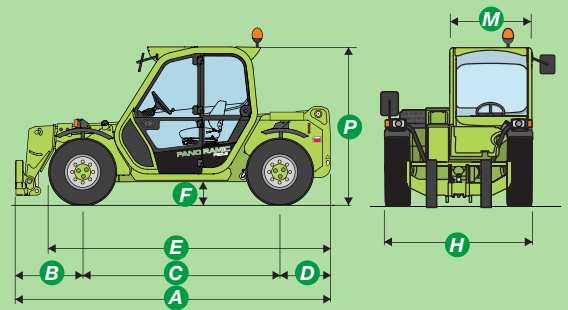
PANORAMIC P 28.8L / PLUS



MERLO
AUSTRALIA

KEY SPECIFICATIONS

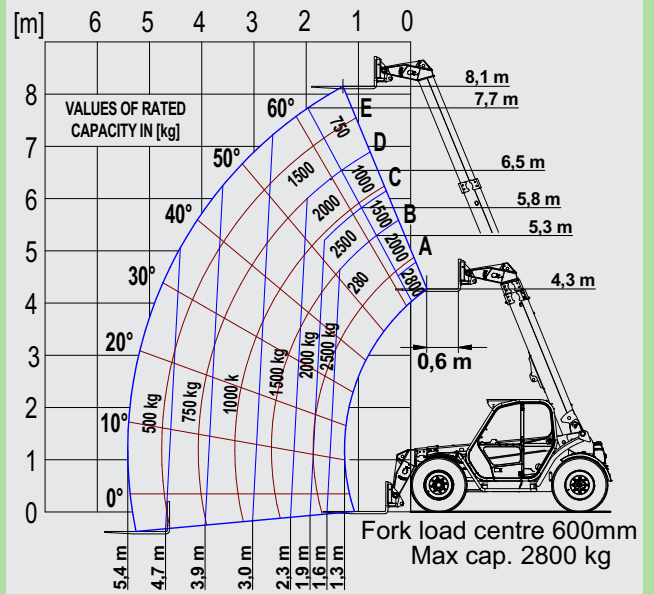
Total weight unladen with forks (kg)	6040
Maximum load capacity (kg)	2800
Maximum lift height (m)	8.2
Maximum forward reach (m)	5.3
Lift height at maximum capacity (m)	4.3
Forward reach at maximum load capacity (m)	1.6
Load capacity at maximum height (kg)	750
Load capacity at maximum forward reach (kg)	500
Engine (make/number of cylinders)	Deutz/4
Tier 3 engine power (kW/hp)	74.9/102
Fuel capacity (l)	100
Maximum speed (kph)	25/40(plus)
Hydraulic gear pump (bar-l/min)	210/100
Hydraulic oil capacity (l)	85
Electrical circuit (V)	12
Battery (Ah)	100
Cab compliant with ROPS/FOPS standards	✓
4x1 Electro Mechanical joystick controls	✓
Tac-Lock hydraulic attachment coupling	✓
Auxiliary boom hydraulics	✓
Two standard forks (1200mm)	✓
Hydrostatic transmission	✓
Finger touch direction control	✓
Inching pedal for precise control	✓
Permanent 4 wheel drive	✓
Four wheel steering	✓
Dry type disc brakes on all wheels	✓
Automatically locking parking brake	✓
405/70-20 tyres	✓
Rear differential lock	✓
Four cab working lights (2f & 2r)	✓
12V electrical on boom head	✓
Air suspension seat	✓
Front window protection	✓
Full size cab with air conditioning	✓
Load Management System	✓



DIMENSIONS

A (mm)	4250
B (mm)	1000
C (mm)	2720
D (mm)	530
E (mm)	3780
F (mm)	385
H (mm)	2000
M (mm)	995
P (mm)	2000
R (mm)	3700
S (mm)	4550

P28.8 Load Chart - Standard forks



The Merlo Panoramic 28.8+ is designed for high productivity and versatility in a variety of environments. The Merlo design gives bigger performance in a smaller lighter machine with added flexibility. The excellent performance in off highway applications, make them ideal for materials handling work. For added productivity, a large range of optional attachments including buckets, crane hooks, winches, jibs and hay bale forks add to the versatility of the P28.8. The flexibility and versatility of telehandlers means they are operational for more hours, giving a higher rate of return. The Merlo Panoramic 28.8 can move 2800kg up to 8m height and travel up to 40 km/h, with the extra benefits of a full size comfort cab. The 3 mode steering adds to the ease of operation. You benefit from easy to use versatile equipment, an increase in efficiency and productivity, and the safest telehandler with 50 years of specialist experience.



1300 657325
merloaustralia.com.au