

# 660SJC Telescopic Crawler Boom Lift



Proportional controller for lift and lower and boom swing give smooth control

One handed operation for operator comfort and control. Proportional drive controller with toggle control for track steer

Jib boom and basket rotate allow additional functionality and access to hard to reach positions

Straight boom function provides increased outreach and allows fast operation from ground to full height using boom lift and telescope and jib

Deutz oil cooled engine and transmission pump for drive performance matched to the engine output

Low maintenance steel platform with non-skid mesh floor, and side entry gate. Enclosed foot switch

Cylinder boots protect cylinder shafts from debris and contaminants

Tie down and lifting lugs for ease of transport

## APPLICATIONS

- Bridge maintenance and reconstruction
- Dam and reservoir construction
- Tunnelling construction
- All maintenance and construction work
- Ideal tilt up panel installation
- Steel building installation
- Steel cladding contractors

Crawler track drive with hydraulic piston 2 speed motors, gear reduction hubs and spring applied brakes for maximum traction, on soft surfaces. Low ground bearing pressure

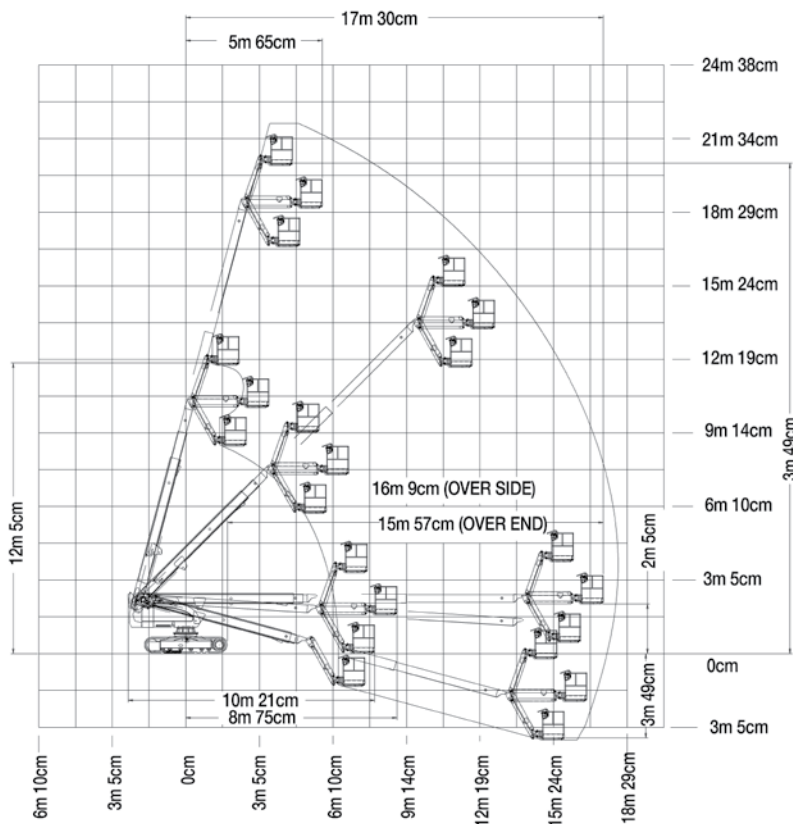
Steel grip plate track for optional bolt on rubber pads on tracks

## QUESTIONS TO ASK

- What are the ground conditions in the work area?
- What are the site conditions travelling around the site?
- What is the working height needed for the job?
- What is the outreach required for the job?
- Do you need an extension lead outlet in the platform?
- Will inbuilt Miller 5.5kVA generator make the job easier?
- Will you need rubber pad tracks for concrete surface?

## KEY SELLING POINTS

- Smooth control, proportional hydraulic crawler drive, with two speed ranges
- Proportional lift and swing controls at the platform for fast functionality
- Jib boom and basket rotate
- Cylinder boots protect cylinder rods from overspray and contaminants
- Multi axis 4 degree level sensor.
- Plug in JLG analyser at platform and base to indicate system functions for servicing and adjustment
- Deutz Engine F4M2011 5DZXL03. High speed, 4 cylinder, liquid (oil cooled), 48.5kW engine pre-glow and post-glow feature reduces emissions



## SPECIFICATIONS

### Performance:

Platform Height (max.)	20.32m
Working Height	22.32m
Platform Rotation Angle	180°
Jib Raise Angle	70°
Jib Lower Angle	60°
Jib Articulation Range	130°
Maximum Horizontal Outreach	17.3m
Lift Time	46-60 sec
Lower Time	33-43 sec
Platform Capacity	230kg
Slewing Angle	360°
Continuous Slew	Yes

### Dimensions:

Stowed Length	10.21m
Stowed Height	2.57m
Overall Width	2.49m
Ground Clearance	0.38m
Platform Width	2.44m
Platform Length	0.91m
Overall Jib Length	1.83m
Tailswing	1.12m

### Power:

Power Source	Diesel
Engine Make	Deutz
Engine Model	D2011 L04
Engine Power	48kW
DC Voltage	12V
DC Power	1000CCA
Genset	5.5kVA Miller
Auxiliary Power	12V Pump

### Travel:

Inside Turn Radius	0m
Drive Speed Elevated	0.3 km/h
Gradeability with 2WD Crawler	55%
Maximum Ground Bearing Pressure	0.457kg/cm <sup>2</sup>

### Weights and Capabilities:

Fuel Tank Capacity	151.0 Ltr
Hydraulic Tank Capacity	121.0 Ltr
Operating Weight	12,300kg